

TRUE MOUNTAIN LODGING



SOCIAL GROUPS PACKAGE



Your Social Group at BUFFALO MOUNTAIN LODGE

Thank you for your interest in Buffalo Mountain Lodge. We would like to take this opportunity to introduce you to our lodge.

The Rocky Mountains have long been an area of great significance to the First Nations people. Near the centre of what is now Banff there is a mountain the early visitors knew as 'Sleeping Buffalo.' Buffalo Mountain Lodge is set amidst the serene beauty of this mountain environment, just minutes away from the shopping and nightlife of Banff Avenue.

Meeting room options include our vaulted-ceiling Wainwright room with outdoor patio, second-level Strathcona room with balcony and the independent cascade-ideal for small reunions. In 1998 we added the Wapiti Longhouse and Wine Cellar. Its magnificent views coupled with stunning decor makes this an ideal spot for groups. If interested in an intimate, casual setting, Cilantro is available during non-peak dates.

Please find attached our Social Group Gathering Planner, complete with accommodation, AV equipment, group facility information and a list of summer and winter activities. For additional information, please contact us directly.

It would be a pleasure to assist you in planning your upcoming gathering at Buffalo Mountain Lodge.

- A complimentary room for the organizer when 20 rooms per night are booked.
 - Prices will vary depending on the season.
 - Black out dates are in effect.

Tiana Dawson

Regional Manager-Meetings & Incentives

403-781-8131

tiana@crmr.com



crmr.com



ACCOMMODATION

All 108 guest rooms feature a wood burning fieldstone fireplace, down duvets, cable television, private entrance, full bathroom, iron and ironing board, and coffee makers.

Premier Queen Rooms

36 rooms, 24 with 2 queen beds, 12 with 1 queen bed, wood burning fieldstone fireplace, oversized bathrooms featuring claw foot tubs, heated slate flooring, balcony or walk out area, and TV.

Premier King Rooms

12 rooms, each with 1 king bed, wood burning fieldstone fireplace, oversized bathrooms featuring a claw foot tub, separate shower, heated slated flooring, balcony or walk out area, and TV.

Lodge Rooms

18 rooms with 1 queen bed, 2 rooms with 1 king bed, and 20 rooms with 2 double beds, wood burning fieldstone fireplace, balcony or walk out area, and TV.

Buffalo Suites

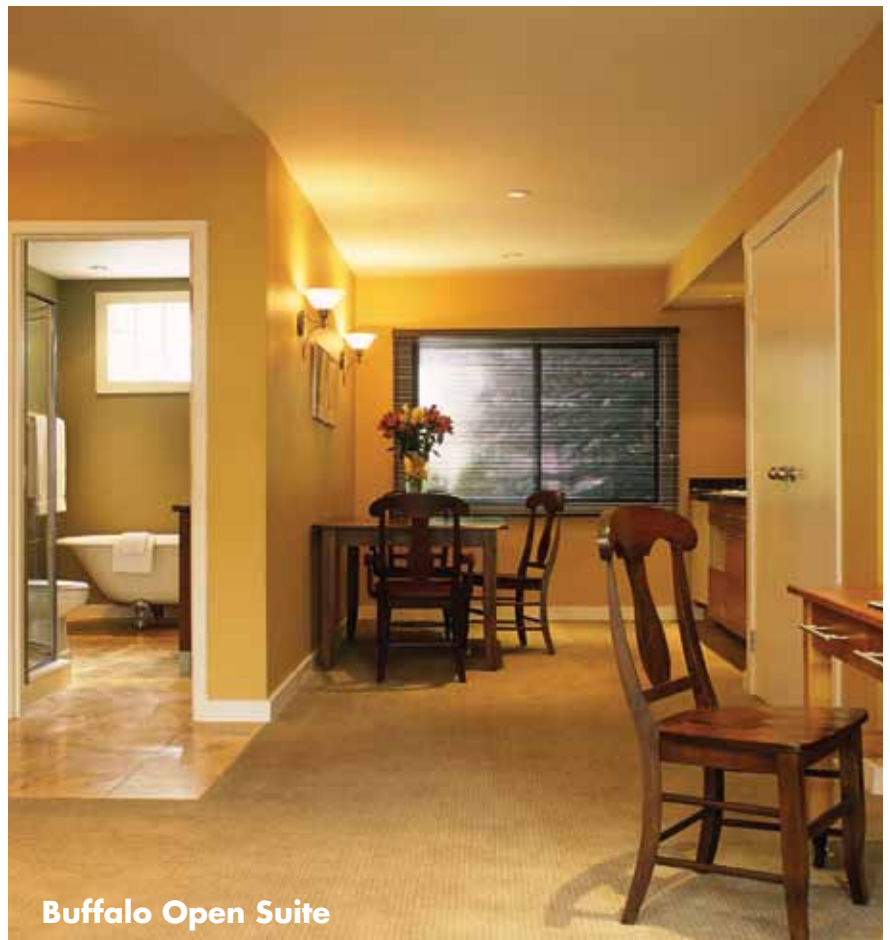
16 suites, 6 rooms with 2 double beds, 6 rooms with 1 king bed and 4 rooms with 1 king bed and plasma TV/DVD player in a separate bedroom, kitchenette, wood burning fieldstone fireplace and TV *Limited availability in winter months.

Buffalo Open Suites

4 suites, each with 1 queen Murphy bed, bathroom featuring claw foot tub, separate shower, kitchenette, wood burning fieldstone fireplace and TV.



Premier Bathroom



Buffalo Open Suite



Premier King Room



MEETING & BANQUET FACILITIES

The property houses 5 rooms for group gatherings. Our staff offers full services to social functions.

*A set-up fee for any function room will apply.

AUDIO VISUAL RENTAL FEES

Overhead & Screen \$55/day TV/ VCR \$45 /day-Slide Projector \$30/day
 Flipchart \$12/day Cordless Mic \$45/day Whiteboard \$12/day
 Laser Pointer \$20/day Lav. Mic \$45/day Smart Board \$250/day
 High Speed Internet Access \$50/day Screen \$25/day LCD Projector \$250/day

All above equipment is available in-house; any needs for Audio Visual other than this will gladly be arranged.

| DIMENSIONS | MEETING Feet | FUNCTION T/S Theater | SPACE C/R Classroom | LAYOUTS | | | |
|--|------------------|----------------------------|---------------------------|----------------|------------------|------------------|-----------------|
| | | | | U/S U-Shape | B/R Boardroom | Rec Reception | Ban Banquets |
| WAINWRIGHT Room Rental: \$750 plus gst *Main Level 30 ft peaked wood beam construction, adjoining outdoor patio, surrounded by windows, which provides natural lighting, in room bar. | 31' X 44' | 100 | 60 | 30 | 40 | 110 | 72 |
| WAPITI LONG HOUSE Room Rental: \$1000 plus gst *Built in 1998 with a beautiful fieldstone log-burning fireplace, balcony, finely decorated with lower level wine cellar accented with log & rock exterior finishing. | 31' X 48' | 100 | 70 | 32 | 40 | 120 | 90 |
| WINE CELLAR Room Rental: \$400 plus gst *Main level of Wapiti Longhouse features wine cellar, heated slab flooring, and vogue mountain wall décor. | 22' x 36' | 40 | 20 | 20 | 15 | 30 | 20 |
| STRATHCONA Room Rental: \$500 plus gst *Second level of Lodge, 20ft peaked wood beam construction, balcony & large picture windows, in room bar. | 31' X 31' | 60 | 45 | 25 | 25 | 65 | 50 |
| CASCADE Room Rental: \$350 plus gst *Boardroom in our Premier complex, natural lighting. | 15' x 30' | - | 20 | 16 | 16 | - - | |
| CILANTRO Min. \$3500 food and beverage *Rustic building with stone bake oven, self-contained, lots of natural lighting, in room bar. Cilantro's is used as a private room for dinner or breakout room during the off -season only (October to April). Cilantro's is unavailable for private bookings May to October inclusively and during the peak ski season. Break Out Rooms *Four rooms on Property. Available for Small Meeting Groups of up to 8 people. Room Rental: \$200 each plus gst | 15' X 20' | 35 | 20 | 15 | 15 | 34 | 34 |



Wapiti Longhouse



CRMR ACTIVITIES



Summer

- Mountain Biking
- Boat Tours and Rentals
- Caving, Climbing, Hiking
- Fishing
- Golfing
- ATV Tours
- Horseback Riding
- Sightseeing
- White Water Rafting
- Geological Hiking
- Team Building- indoor and outdoor
- Spas and Hot Springs

Winter

- Skating
- Down Hill Skiing
- Cross Country Skiing
- Snowshoeing
- Dog Sledding
- Ice Walks
- Snowmobiling
- Heli-Skiing
- Sleigh Rides
- Spas and Hot Springs

- Most activities are not located on site but are near the resorts
- Please contact our sales and conference staff for contact information for these activities

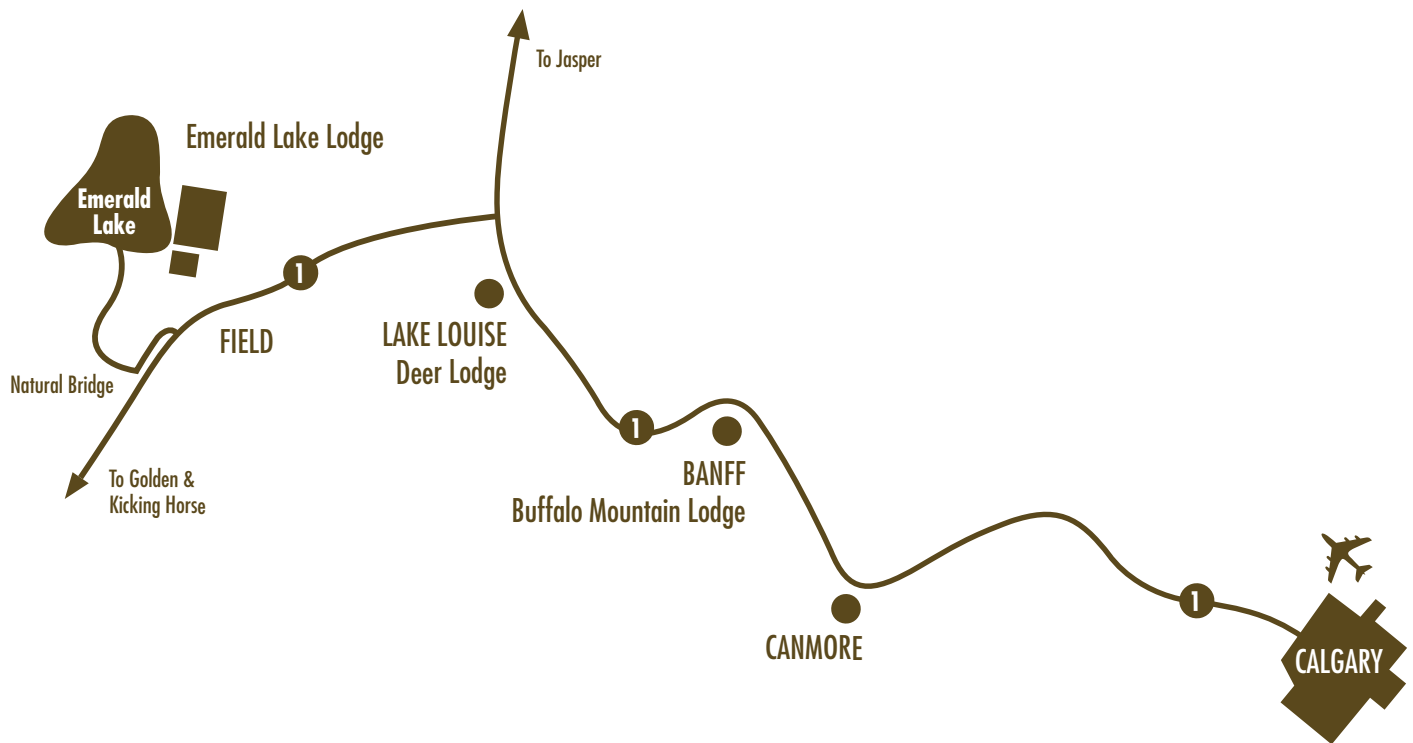




BUFFALO MOUNTAIN LODGE DIRECTIONS

In a quieter area of Banff, we are located on Tunnel Mountain Drive just a 3-minute drive or a 15 minute walk to the downtown area (1 ½ hour drive from the Calgary International Airport).

Take the first exit into Banff, make a left off the Exit. Take the first road to the left, which runs between " Banff Rocky Mountain Resort" This road is Tunnel Mountain Drive and you will see a sign that also says to " Tunnel Mountain Campgrounds." Follow the road for about 10 minutes passing the campgrounds and we are the second hotel on the left.





Canadian Rocky Mountain Resorts

Suite 900-600 6th Avenue S.W.
Calgary, Alberta, Canada T2P 0S5
1.800.661.1367
www.crmr.com